

# FERTILIZER KNIVES



## SUPERIOR ACTION

High quality  
liquid & AA  
fertilizer knives  
options

## EXTENDED WEAR LIFE

Boron steel  
knife shanks  
for reduced  
breakage

## OPTIMAL YIELDS

Chrome toe  
and hardfaced  
options

Single or dual  
stainless steel  
tubes & sealers  
available on  
most styles

Variety of styles: standard, strip-till, backswept, stubble

## STOCK AVAILABLE NOW

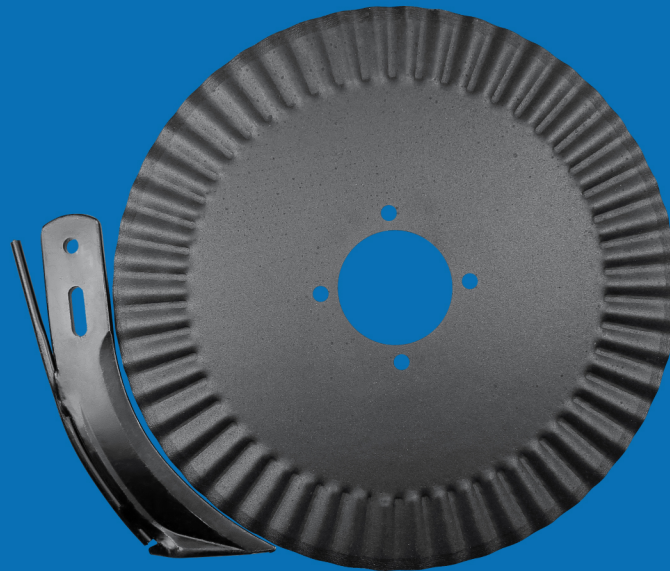
and more in current production



Universal punching to fit most applicators

For more information call **1-888-4-BLADES (425-2337)**  
or visit **[www.wearpartsllc.com](http://www.wearpartsllc.com)**

<b>Standard Knives</b>	<b>1</b>
<b>Backswpt Knives</b>	<b>2</b>
<b>Narrow Profile Knives</b>	<b>2</b>
<b>DMI Knives</b>	<b>2</b>
<b>Freezeless Knives</b>	<b>3</b>
<b>Mole Knives</b>	<b>3</b>
<b>Mini Mole Knives</b>	<b>4</b>
<b>Spare Parts</b>	<b>4</b>
<b>Shanks</b>	<b>5</b>
<b>Coulter Blades</b>	<b>5</b>



**"We run a 60ft high speed liquid fertilizer bar over no-till ground, so having knives wear out quickly is just the name of the game. After looking at the product provided by Wearparts, we noticed big differences and were pretty impressed, hoping we'd be able to get the same performance yet more life out of them in the field... After running hard for a few days, the results were extremely impressive and we ordered more that day. The lifespan of Wearparts' knives compared to others was almost double, yet the price was very comparable."**

**- Wearparts Customer, Indiana**

# WEARPARTS

## STANDARD KNIVES



ID	Part #	Description	Interchange
A	KFR800XX30	Standard, No Chrome Toe, No Sealer, 3/8" Tube	Wiese # CO501000
A	KFR800XX30HF	Standard, No Chrome Toe, No Sealer, 3/8" Stainless Steel Tube, Hardfaced	Wiese # CO501010
A	KFR880XX30	Standard, No Chrome Toe, No Sealer, 3/8" Stainless Steel Primary Tube, 3/8" Stainless Steel Secondary Tube	Unverferth # 9007544
A	KFR880XX30ET	Standard, No Chrome Toe, No Sealer, 3/8" Stainless Steel Primary Tube, 3/8" Stainless Steel Secondary Tube, Exposed Tube	
A	KFR200XX30	Standard, No Chrome Toe, No Sealer, 1/2" Stainless Steel Tube	Wiese # CO502000
A	KFR200XX30HF	Standard, No Chrome Toe, No Sealer, 1/2" Stainless Steel Tube, Hardfaced	Wiese # CO502010
B	KFR800CX31	Standard, Chrome Toe, No Sealer, 3/8" Stainless Steel Tube	Wiese # A50H104X
B	KFR800CX31PD	Standard, Chrome Toe, No Sealer, 3/8" Stainless Steel Tube-Pinched & Drilled	Shield K-2S
B	KFR840CX31	Standard, Chrome Toe, No Sealer, 3/8" Stainless Steel Primary Tube, 3/4" Stainless Steel Secondary Tube	Wako # KKNCS50A3DTP
B	KFR800CS31	Standard, Chrome Toe, Sealer, 3/8" Stainless Steel Tube	Wiese # A50H114X
B	KFR840CS31	Standard, Chrome Toe, Sealer, 3/8" Stainless Steel Primary Tube, 3/4" Stainless Steel Secondary Tube	Wako # KKNCS50AS3DPT
C	KFR800CX32	Standard, Chrome Toe, No Sealer, 3/8" Stainless Steel Tube	Wiese # CO50104X
C	KFR200CX32	Standard, Chrome Toe, No Sealer, 1/2" Stainless Steel Tube	Wiese # CO50104X
C	KFR200CX32N	Standard, Chrome Toe, No Sealer, 1/2" Stainless Steel Tube, No Splitter Tail	N5CPTP4S
D	KFR800XX33	Standard, No Chrome Toe, No Sealer, 3/8" Stainless Steel Tube	Wiese # AT501000
D	KFR840XX33	Standard, No Chrome Toe, No Sealer, 3/8" Stainless Steel Primary Tube, 3/4" Stainless Steel Secondary Tube	Wako # KKNWW50TA3DTP
D	KFR200XX33	Standard, No Chrome Toe, No Sealer, 1/2" Stainless Steel Tube	Wiese # AT502000
D*	KFR800CX33	Standard, Chrome Toe, No Sealer, 3/8" Stainless Steel Tube	Wiese # A50UVX104X
D*	KFR800CS33	Standard, Chrome Toe, Sealer, 3/8" Stainless Steel Tube	Wiese # A50UVX114X
D*	KFR840CS33	Standard, Chrome Toe, Sealer, 3/8" Stainless Steel Primary Tube, 3/4" Stainless Steel Secondary Tube	Wiese # A50UV1834X
D	KFR800XS33	Standard, No Chrome Toe, Sealer, 3/8" Stainless Steel Tube	Wako # KKNWW50T
D	KFR880XS33	Standard, No Chrome Toe, Sealer, 3/8" Stainless Steel Primary Tube, 3/8" Stainless Steel Secondary Tube	Wako # KKNWW50TS Wako #
D	KFR840XS33	Standard, No Chrome Toe, Sealer, 3/8" Stainless Steel Primary Tube, 3/4" Stainless Steel Secondary Tube	KKNWW50AS3DTP

## WEARPARTS BACKSWEPT KNIVES



Part #	Description	Interchange
KFB800CX40	Curved Backswept, Chrome Toe, No Sealer, 3/8" Stainless Steel Tube	Wiese # A50VT1009
KFB200CX40	Curved Backswept, Chrome Toe, No Sealer, 1/2" Stainless Steel Tube	Wiese # A50VT2009
KFB800CX41	Angled Backswept, Chrome Toe, No Sealer, 3/8" Stainless Steel Tube	Wiese # A50BK104X
KFB800CX41FF	Angled Backswept, Chrome Toe, No Sealer, 3/8" Stainless Steel Tube, Full Flow	Wiese # A50BK104X
KFB200CX41	Angled Backswept, Chrome Toe, No Sealer, 1/2" Stainless Steel Tube	Wiese # A50BK204X
KFB200CX41FF	Angled Backswept, Chrome Toe, No Sealer, 1/2" Stainless Steel Tube, Full Flow	Wiese # A50BK204X
KFB200CX40Y	Backswept, Chrome Toe, No Sealer, 1/2" Stainless Steel Tube, Third Mounting Hole for Yetter	

## WEARPARTS NARROW PROFILE KNIVES



Part #	Description	Interchange
KFY200CX55	Narrow Profile, Chrome Toe, No Sealer, 1/2" Stainless Steel Tube	Yetter # 2996-200, 2996-210
KFY800CX55	Narrow Profile, Chrome Toe, No Sealer, 3/8" Stainless Steel Tube	Yetter # 2996-200
KFN800CX50	Narrow Profile, Chrome Toe, No Sealer, 3/8" Stainless Steel Tube	Wiese # A50NP104X

## WEARPARTS DMI KNIVES



Part #	Description	Interchange
KFD800CX80	DMI, Chrome Toe, No Sealer, 3/8" Stainless Steel Tube	Wiese # A50DMI104X
KFD800CX82	DMI, One-Piece All Chrome Body, No Sealer, 3/8" Stainless Steel Tube	CNH84526357

# WEARPARTS

## FREEZELESS KNIVES



Part #	Description	Interchange
KFF000CX31	Standard, Chrome Toe, No Sealer, Freezeless	Shield Ag K-2TF
KFF040CX20	Mole, Chrome Toe, No Sealer, Freezeless	Shield Ag K-2TF-3-4DA
KFF000CX20	Mole, Chrome Toe, No Sealer, Freezeless, 3/4" Stainless Steel Secondary Tube	Shield Ag K-2TF-3-4DA
KFF040CX31	Standard, Chrome Toe, No Sealer, Freezeless, 3/4" Stainless Steel Secondary Tube	Shield Ag K-2 with Vapor Tube
KFF000CS31	Standard, Chrome Toe, Sealer, Freezeless	Shield Ag K-2TF with Sealer Plate
KFF040CS31	Standard, Chrome Toe, Sealer, Freezeless, 3/4" Stainless Steel Secondary Tube	Shield Ag K-2TF with Vapor Tube
KFF000CS20	Mole, Chrome Toe, Sealer, Freezeless	Shield Ag K-2T with No Tubes
KFF040CS20	Mole, Chrome Toe, Sealer, Freezeless, 3/4" Stainless Steel Secondary Tube	Shield Ag K-2TF-3-4DA

# WEARPARTS

## MOLE KNIVES



Part #	Description	Interchange
KFL800CX20	Mole, Chrome Toe, No Sealer, 3/8" Stainless Steel Tube	Wiese # A50SS104X
KFL800CS20	Mole, Chrome Toe, Sealer, 3/8" Stainless Steel Tube	Wiese # A50SS14X
KFL880CX20	Mole, Chrome Toe, No Sealer, 3/8" Stainless Steel Primary Tube, 3/8" Stainless Steel Secondary Tube	Wiese # A50SS1818
KFL820CX20	Mole, Chrome Toe, No Sealer, 3/8" Stainless Steel Primary Tube, 1/2" Stainless Steel Secondary Tube	Wiese # A50SS1812
KFL200CX20	Mole, Chrome Toe, No Sealer, 1/2" Stainless Steel Tube	Wiese # A50SS204X
KFL400CX20	Mole, Chrome Toe, No Sealer, 3/4" Stainless Steel Tube	Wiese # A50SS304X
KFL840CX20	Mole, Chrome Toe, No Sealer, 3/8" Stainless Steel Primary Tube, 3/4" Stainless Steel Secondary Tube	Wiese # A50SS1834, Wako # KKNK100A3DTP
KFL800CX25	Mole, Chrome Toe, No Sealer, 3/8" Stainless Steel Tube	Schlagel RT3033

# WEARPARTS

## MINI-MOLE KNIVES



Part #	Description	Interchange
KFM800CX11	Mini-Mole, Chrome Toe, No Sealer, 3/8" Stainless Steel Tube	Wiese # A50MM104X
KFM840CX11	Mini-Mole, Chrome Toe, No Sealer, 3/8" Stainless Steel Primary Tube, 3/4" Stainless Steel Secondary Tube	Wiese # A50MM1834, Wako # KKNMT50A3DTP
KFM800CS11	Mini-Mole, Chrome Toe, Sealer, 3/8" Stainless Steel Tube	Wiese# A50MM114X, Wako # KKNMT50AS
KFM840CS11	Mini-Mole, Chrome Toe, Sealer, 3/8" Stainless Steel Primary Tube, 3/4" Stainless Steel Secondary Tube	Wako # KKNMT50AS3DTP

# WEARPARTS

## SPARE PARTS



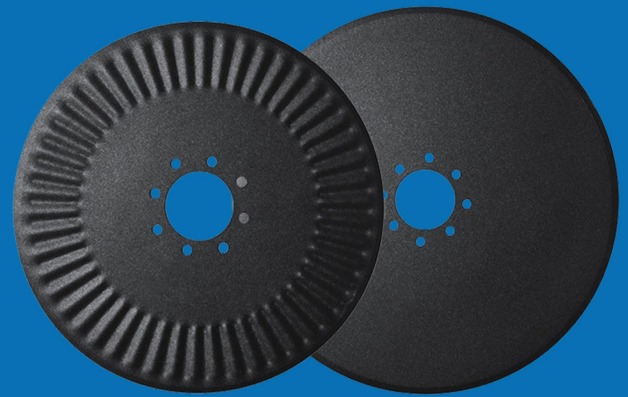
Part #	Description	Interchange
KSP230ST	1/2" OD Stainless Steel Tube, KFR200XX30, 2 mm wall	
KSP820ST	3/8" OD Stainless Steel Tube, KFL800CX20, 2 mm wall	
KSP830ST	3/8" OD Stainless Steel Tube, KFR800XX30, 2 mm wall	
KSP832ST	3/8" OD Stainless Steel Tube, KFR800CX32, 2 mm wall	
KSP833ST	3/8" OD Stainless Steel Tube, KFR800XS33, 2 mm wall	
KSP800ST	3/8" OD Stainless Steel Tube, 15" Sraight Open End	
KSP800STCD	3/8" OD Stainless Steel Tube, 15" Straight Closed and Drilled End	
KSP400ST	3/8" OD Stainless Steel Tube, 15" Straight Open End	
KSP200ST	1/2" OD Stainless Steel Tube, 15" Straight Open End	
KSP200STCD	1/2" Od Stainless Steel Tube, 15" Straight Closed & Drilled End	
KSP020CG	Chrome Tube Guard	
KSP820CT	Chrome Toe for KFL800CX20 Mole Knife	
KSP811CT	Chrome Toe for KFM800CX11 Mini Mole Knife	
KSP832CT	Chrome Toe For KFR800CX32	
KSP833CT	Chrome Toe For KFR800CX33	
KSP831CT	Chrome Toe For KFR800CX31	
KSP033SP	Sealer Plate 3/8"	
KSP075NSP	Seal Plate, Narrow Beavertail Style	Wiese # AS75N

## WEARPARTS SHANKS



Part #	Description	Interchange
KFS1295	Side Bolt Shank, 1" x 2"	(KSC-1295)
KFS1298	Shank Flat Side Mount DMI, Standard Duty, 1" x 2"	(KSC-1298)
KFS1299	Shank Flat Side Mount DMI, Heavy Duty, 1-1/4" x 2"	(KSC-1299)
KFS2125	Edge Bent Shank to fit Blue Yet	(AP2125)

## WEARPARTS COULTER BLADES



Part #	Description	Interchange
CS124583A1	20" x 4.5mm Smooth Coulters Blade, 4 on 5" & 4 on 5-1/4", 3-11/16" Pilot, (8) 1/2" RD Bolts	
CS125083	20" x 5mm Smooth Coulters Blade	
CS126083	20" x 6mm Smooth Coulters Blade	
CS145083	22" x 5mm Smooth Coulters Blade	
CS146083	22" x 6mm Smooth Coulters Blade	
CS146581T	22" x 6.5mm Smooth Coulters Blade, Single Bevel, Replaces	Yetter 2571-279
CS155083A1	24" x 5mm Smooth Coulters Blade, 4 on 5" & 4 on 5-1/4", 3-11/16" Pilot, (8) 1/2" RD Bolts	
CS156083	24" x 6mm Smooth Coulters Blade	
CF124591A1	20" x 4.5mm Smooth Edge Fluted Coulters, 4 on 5" & 4 on 5-1/4", 3-11/16" Pilot, (8) 1/2" RD Bolts	
CN124583A1	20" x 4.5mm Notched Coulters Blade. 4 on 5" & 4 on 5-1/4", 3-11/16" Pilot, (8) 1/2" RD Bolts	

***wearparts***  
TILLAGE TOOLS

*Cultivating Solutions for Growth*

For more information call **1-888-4-BLADES (425-2337)**  
or visit **[www.wearpartslc.com](http://www.wearpartslc.com)**